

Early Doors Mon 11 May @ 11.00am

### Our Land (12A)

Out Fri 8 May

Documenting the Right to Roam movement, who set out to increase public access to nature through organised 'mass trespass' events.



### Kes + Dai Bradley Q&A (PG)

Sun 10 May @ 15.30

Schoolboy Billy Caspar finds purpose in taming and training a kestrel falcon in Ken Loach's classic, based on Barry Hines' story.

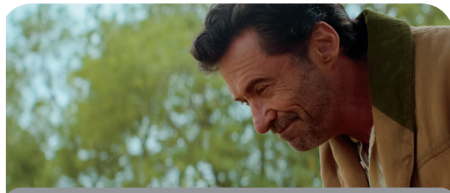


### Coming Up... Exhibition on Screen: Frida Kahlo (12A)

From Tue 19 May

Everyone knows Frida Kahlo's face but who was the woman behind the bright colours, the big brows and the floral crowns?

Important Note: All information is subject to change. Check our website or ask our cinema team for the latest times.



Early Doors Thu 14 May @ 11.00am

### The Sheep Detectives (PG)

From Fri 8 May

*Babe* meets *The Thursday Murder Club*, after a flock of sheep investigate the mysterious death of their shepherd (Hugh Jackman).



### Presents: Surviving Earth (15)

Mon 11 + Tue 12 May

Vlad, a refugee of the Yugoslav conflict, now works as a drugs counsellor in Bristol, pursuing success with his riotous Balkan band.

## showroom cinema

For full programme details and to book your tickets please visit:

[showroomcinema.org.uk](http://showroomcinema.org.uk)

Find us on social media:



Registered charity no. 1002020

# THIS WEEK AT showroom



## Fri 8 May - Thu 14 May 2026

The Sheep Detectives (PG) | From Fri 8 May

# THIS WEEK AT showroom

The Working Class Film Festival runs this weekend at Showroom, bringing over thirty short films from emerging directors. Far from the kitchen sink, we've got

sci-fi, horror, comedy and experimental shorts. For £13.50 get a Saturday or Sunday pass and see something new! Of course we're also screening *Pressure* and *Kes*, with a special Q&A from star David 'Dai' Bradley.

New releases this week include *The Sheep Detectives* and *Our Land*, while Film

Studies and *Wadja* at 100 continue with classics.

Bank holiday specials go on sale this week. The Red Curtain Trilogy, screening the first three films from Baz Luhrmann on Mon 25 May, and *Ani-May*, a grab-bag of five cult classics in Japanese animation, including *Paprika*, on Sat 23 May. Don't miss it!

AD - Audio description available on request.  
BK - Baby Kino: Relaxed screenings for parents and babies (under one).  
D - Dubbed: Screening is dubbed in English.  
ED - Early Doors: Coffee, cake and the big screen, all for just £9 (for over 55s).  
F - F-Rated: Spotlighting female talent on screen and behind the camera.  
FT - Family Time: Relaxed, family-friendly screenings for £6.  
FL - Foreign Language: English language subtitles at all screenings.  
RS - Relaxed: Relaxed screenings of this month's biggest releases.  
S - Subtitled: Hard of hearing subtitles at all screenings.  
TK - Toddler Kino: Relaxed, toddler-friendly screenings for £3.99

## GENERAL RELEASES

WHAT'S ON	FRI 08	SAT 09	SUN 10	MON 11	TUE 12	WED 13	THU 14
Exit 8 (15) (AD) (FL)	-	20:30	-	-	-	-	20:30
Our Land (12A) (AD)	15:00 / 18:25 / 20:30	13:00 / 15:15 / 20:00	14:00 / 16:15	(S) - 11:00 (ED) / 15:20	13:00 / 17:30 / 20:30	13:00 / 15:15	13:00 / 17:45 / 19:50
Primavera (15) (FL)	13:15	-	-	12:30	12:00	-	15:00
Rose of Nevada (15) (AD)	15:45 / 20:30	17:30	19:15	(S) - 20:15	15:10 / 20:15	15:30 / 20:15	15:15 / 18:00
The Devil Wears Prada 2 (12A) (AD)	12:00 / 14:40 / 17:30 / 20:00	11:40 / 14:15 / 17:00 / 19:45	12:00 / 16:40 / 19:45	(S) - 12:45 / 15:00 / 17:40 / 20:15	12:00 / 14:40 / 17:40 / 19:45	12:00 / 14:40 / 17:30 / 19:45	11:30 / 14:15 / 17:30 / 20:10
The North (15) (FL)	12:15	-	-	15:15	15:00	12:30	12:15
The Sheep Detectives (PG) (AD)	12:30 / 15:00 / 17:30 / 20:15	13:15 (RS) / 15:45 / 18:10	12:15 / 14:45 / 19:00	(S) - 12:15 (BK) / 12:30 / 15:30 / 18:00 / 20:25	13:15 / 15:45 / 18:10 / 20:30	13:15 / 15:40 / 17:20	11:00 (ED) / 13:25 / 15:45 / 18:10 / 20:30

## SPECIAL SCREENINGS AND EVENTS

<b>FRI 08</b>	17:30 <i>Pressure</i> [+ Intro] (WCFF26) (15)
<b>SAT 09</b>	09:00 Working Class Film Festival: Sat Shorts Pass (WCFF26) // 10:45 Working Class Film Makers: A Young Persons Crash Course (WCFF26) (TBC) // 11:00 Family Time: Goat (PG) (FT) // 12:40 Working Class Transitions (WCFF26) (15) // 14:40 Working Class & Marvellous (WCFF26) (12A) // 16:40 Working Class Realities (WCFF26) (15) // 19:00 A Town I Love so Well [+ Q&A] (WCFF26) (15)
<b>SUN 10</b>	09:00 Working Class Film Festival: Sun Shorts Pass (WCFF26) // 11:00 This Class Works (WCFF26) (15) // 11:45 The Christophers + Recorded Intro [Preview] // 12:35 The Lab Class - WCFF26 (15) // 14:30 <i>Wadja</i> at 100: The Innocent Sorcerers (12A) (FL) // 15:30 <i>Kes</i> + David Bradley Q&A (WCFF26) (PG) // 17:00 The Christophers + Recorded Intro [Preview] // 18:30 Uncommon Voices: Exploring Class in New British Cinema (WCFF26) (TBC)
<b>MON 11</b>	18:30 Pitchblack Playback - Beach Boys "Pet Sounds" (15+) // 20:00 Presents: <i>Surviving Earth</i> (15) (F)
<b>TUE 12</b>	17:45 Presents: <i>Surviving Earth</i> (15) (F)
<b>WED 13</b>	18:30 Film Studies: <i>The Grandmaster</i> [Extended Cut] (CTBA)
<b>THU 14</b>	17:50 Work Station: Free Workshop with the Public Speaking Academy

Important Note: All information is subject to change. Check our website or ask our cinema team for the latest times.